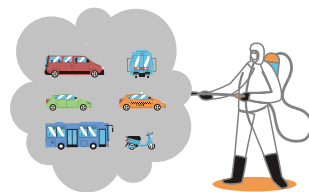


For your safety, at the beginning of work -labors- the temperature of all our operators is taken.



Our vehicles are sanitized and disinfected, prior to each transfer.



Operators should use disposable latex gloves, mask and face shield, during all services.



Vehicles will be sanitized between one transfer and another

(although the following service will be for the same passengers).



The operator is the one who must open and close the doors for the passengers to go up and descend the unit.

The unit can only carry the 50% of its regular capacity.



Operator shall check the temperature of each one of the passengers before boarding and offer antibacterial gel in case of that a passenger requires it.



Each unit is equipped with antibacterial gel with 70% alcohol and infrared thermometer.

TRANSPORTE  
**SIN  
FIN**  
DE SERVICIOS

SUPPORT24

3336 76 58 08 

[24horas@sinfineservicios.com](mailto:24horas@sinfineservicios.com)